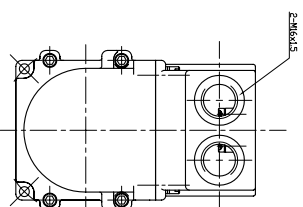
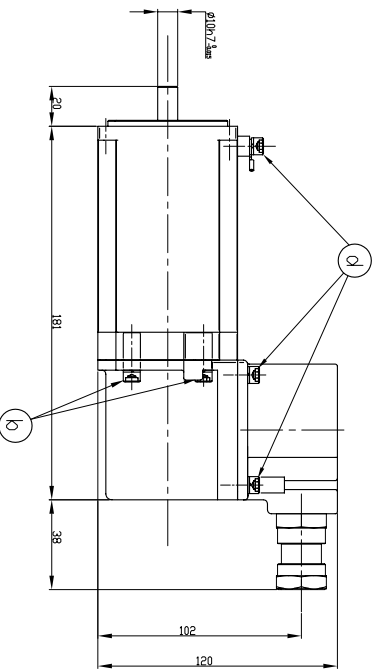
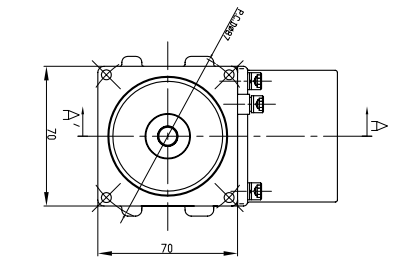
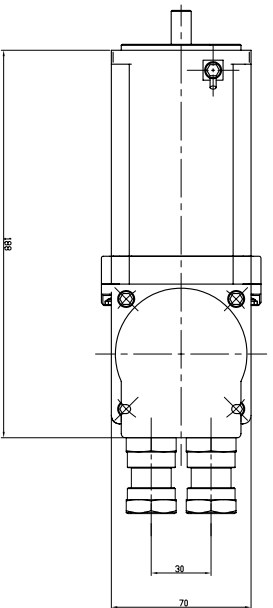
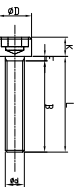


SYM	REVISION DESCRIPTION	REV. NO	DATE	CHK'D			
Δ							
Δ							
P/NO	DWG. NO	ITEM	MATERIAL	Manufacturing	MATL.SIZE	WEIGHT	REMARK
1							
2							
3							
4							
5							
6							
7							
8							
9							
10							
11							
12							
13							
14							
15							
16							
17							
18							



SIZE	OUTPUT	POLES	VOL TAGE	FREQUENCY	INSULATION CLASS	SERVICE	AMB. TEMPERATURE	BEARING TYPE
70Fr	200w	8	220V	200Hz	F TYPE	S1	-20°~40°	6902ZZ/ 6000ZZ

BOLT SPEC.			L	E	B	K	φD	φd1	S/P Washer
①	M3*P0.5	8	1.5	6.5	3	5.5	3	3.9	0.74
②	M4*P0.7	12	2	11	4	7	4	4.4	1.1
③	M4*P0.7	20	2	18	4	7	4	4.4	1.1
④	M5*P0.8	12	2	11	5	8.5	5	5.5	1.34



FIXING BOLT AND SCREWS AND CHARACTERISTICS

SCREW M3*8 ISO 4762 -S1 12.9

SCREW M4*12 ISO 4762 -S1 12.9

SCREW M4*12 ISO 4762 -S1 12.9

SPRING WASHER 3 DIN 7980 SPRING STEEL(SVWRHGB)

SPRING WASHER 3 DIN 7980 SPRING STEEL(SVWRHGB)

SCREW M4*20 ISO 4762 -S1 12.9

SCREW M5*12 ISO 4762 -S1 12.9

SCREW M5*12 ISO 4762 -S1 12.9

SPRING WASHER 3 DIN 7980 SPRING STEEL(SVWRHGB)

SPRING WASHER 3 DIN 7980 SPRING STEEL(SVWRHGB)

UNIT	mm	SCALE	N/A	Publication Date	2019.05.04	Rev No	0
DWG. DESIGN	CHK	CHK	APPROVAL				
DRAWN	CHK	CHK	APPROVAL				
HILTIEN				MOTOR ASSEMBLY			
TRIMETHD				FMAEVO2-AA01			
DWG.				4680SO3001B			
				1/2			