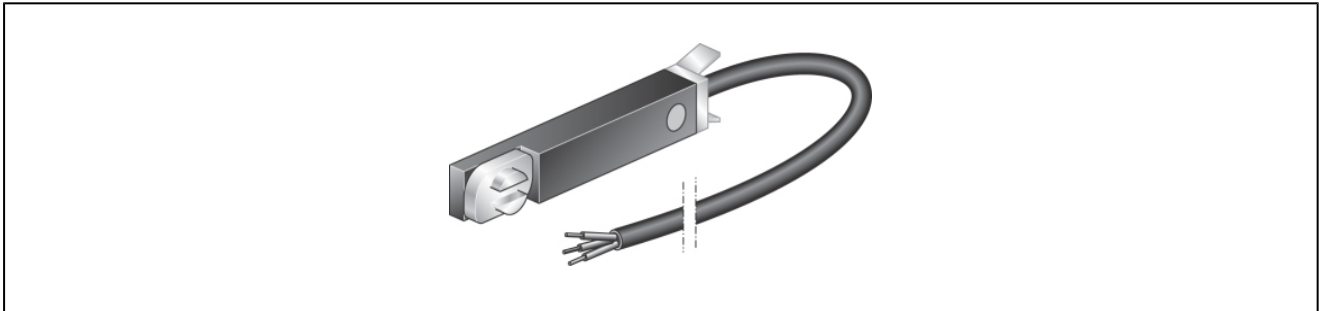


magnetic switch series VNC/VNP/RV2I/DCP2



design	reed switch type VNCR2, VNPR2,RV2I, DCP2 electronic switch type VNCE3, VNPE3 all switches with LED
actuation	by permanent magnet
ambient temperature	-20°C...+85°C
type of fixing	in the cylinder groove respectively with bracket
function	NO contact
protection class	IP67

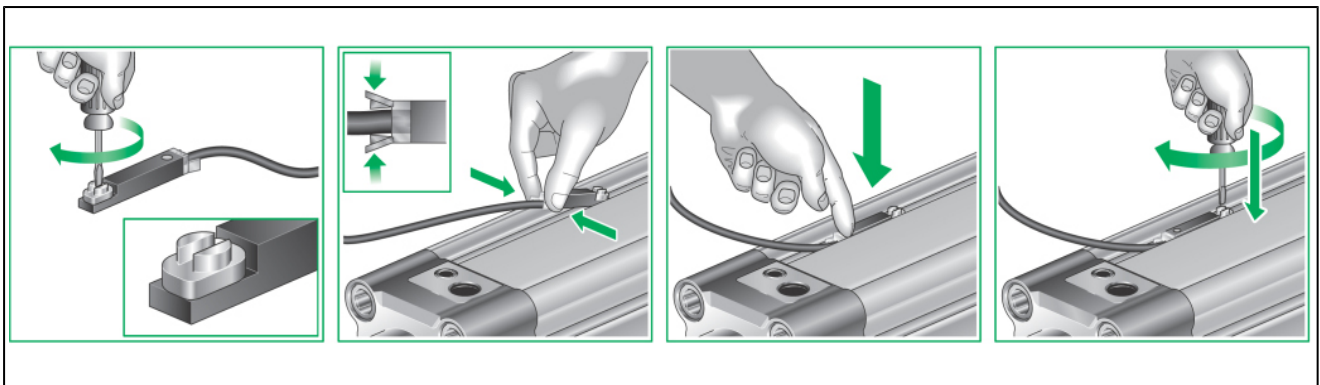
magnetic switch

DCP2		
VNPR2/RV2I		
VNCR2		
VNPE3		
VNCE3		

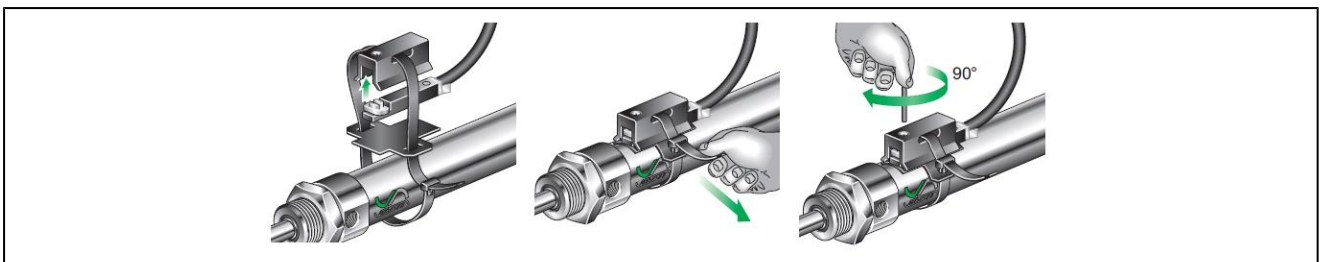
voltage [V]	maximum current [mA]	maximum power [VA]/[W]	electrical life span	contact resistance	cable length [m]	type
3-110V AC-DC	300	10/10	10 ⁷	0,1	3 (with connector)	DCP2
10-250V AC-DC	250	8/8	10 ⁷	0,1	2,5	RV2I
3-48 AC-DC	100	6	10 ⁷	0,1	-	VNCR2
3-48 AC-DC	100	6	10 ⁷	0,1	3	VNPR2
6-30 DC	200	4	10 ⁹	-	-	VNCE3
6-30 DC	200	4	10 ⁹	-	3	VNPE3

cylinder/gripper	diameter [mm]	switch type	bracket
ACM	16-25	VN../RV2I	FFS01VN
ACMT	32-50	VN../RV2I	FFS02VN
AW	32-100	VN../RV2I	no
CRW	25-100	VN../RV2I	no
DVM	12	VN..	FFS01VN
DVM	16-25	VN../RV2I	FFS01VN
MHM	20-32	VN../RV2I	no
MHM	50	DCP2	no
NSKU/NSKI	16-100	VN../RV2I	no
NWT	32-125	VN../RV2I	no
XJC	160-200	VN../RV2I	FJS160VN, FJS200VN

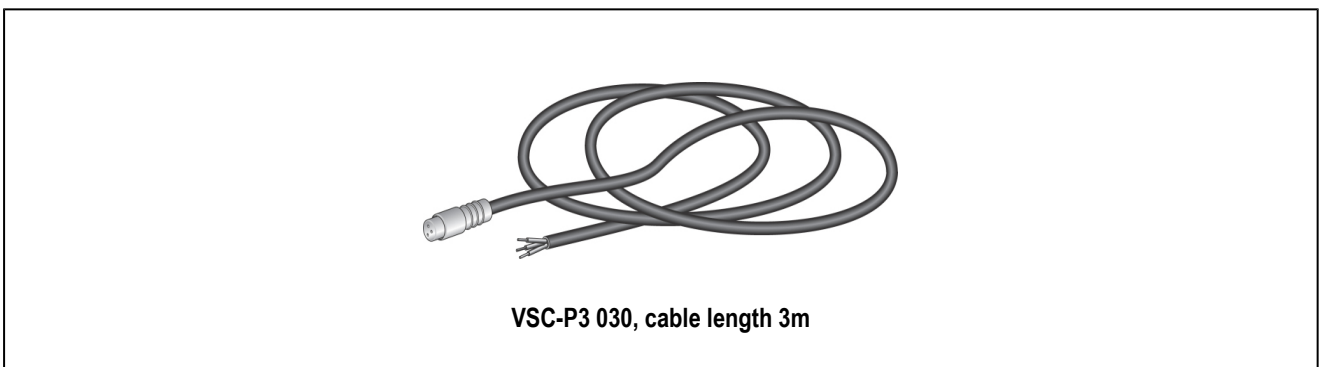
assembly instruction for magnetic switch



assembly instruction for cylinder according to ISO6432



extension cable for magnetic switch series VNC



illustrations are for information only and are non-binding
all designs, configurations, measurements and materials are subject to change without prior notice