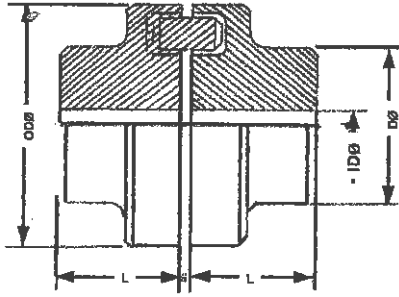


# Normex NM Couplings



Coupling NM Type	Torque Kg / m		Max Speed RPM <sub>s</sub>	Bore Diameter		Boss Dia (D)	Outside diam. (OD)	Distance Through boss (L)	Approx. weight Kgs.
	Normal	Max		Min	Max				
50	1.3	2.3	13,500	7	19	33	50	25	0.48
67	2.2	4	10,000	9	28	46	67	30	1.02
82	5.0	9	8,000	10	32	53	82	40	1.88
97	10.5	19	7,000	12	42	69	97	50	3.54
112	16.7	30	6,000	14	48	79	112	60	5.40
128	26.7	48	5,000	18	55	90	128	70	8.10
148	41.7	75	4,500	22	65	107	148	80	13.50
168	69.5	125	4,000	28	75	126	170	90	19.30
184	11	200	3,500	32	85	140	194	100	28.30
214	167	300	3,000	45	95	157	214	110	35.70