

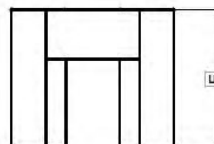
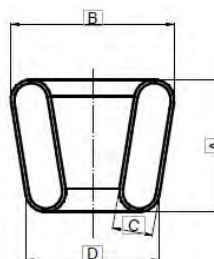
RU - STEEL

ITALIA s.r.l.

Azienda certificata UNI EN ISO 9001 N 1309/98

Edizione 2017

Ricambi Elastici RU-STEEL Tipo TA (Gomma) RU-STEEL Type TA Elastic Spares (Rubber) SCHEDA 02



CODICE <i>Code</i>	Dimensioni <i>Dimensions</i>					Marcatura <i>Signed on</i>	N° tasselli* <i>Blocks num.</i>
	A	B	C	D	E		
SET TA 4	25	37	10	26	24	A 4	6
SET TA 5	30	43	11	29	24	A 5	6
SET TA 6	34	52	12	36	33	A 6	6
SET TA 7	44	62	14	44	38	A 7	6
SET TA 8	45	57	16	47	40	A 8	8
SET TA 9	46	67	18	54	39	A 9	8
SET TA 10	53	75	18	59	50	A 10	8
SET TA 11	59	94	25	78	55	A 11	8
SET TA 12	64	106	27	88	59	A 12	8
SET TA 13	84	91	27	70	75	A 13	12
SET TA 14	89	104	30	92	80	A 14	12
SET TA 15	110	126	30	110	100	A 15	12

*Indica il numero di tasselli contenuti in un SET, necessario per un giunto completo
Rubber block quantity for each SET, necessary for one complete coupling

Sconto.....%